



ROUTE 208 (COURTHOUSE ROAD) Phase II – Preferred Alternative for Route 208 and Smith Station Road Intersection

FROM WOODLAND DRIVE TO BLOOMSBURY LANE

PROJECT DESCRIPTION

Existing Deficiencies at Route 208 intersection with Smith Station Road:

- Pedestrian/Bicycle Facilities: No pedestrian crossings.
- Crash Rates: Higher than Spotsylvania/Fredericksburg average.
- Capacity Issues: Long queues and unacceptable levels of service (LOS).

Proposed Improvements at Route 208 intersection with Smith Station Road:

- Add a left-turn lane on the northbound approach to convert it to dual left-turns.
- Extend the left-turn taper and storage lanes on Route 208 eastbound.
- Install pedestrian crosswalks and pedestrian signal heads at the east and south legs.
- Construct a 3rd westbound through lane on Route 208 from Foster Road and tie it into the existing westbound right-turn lane at Bloomsbury Lane.
- Close the entrance to the gas station located on the northeast quadrant of this intersection.

PROJECT BENEFITS

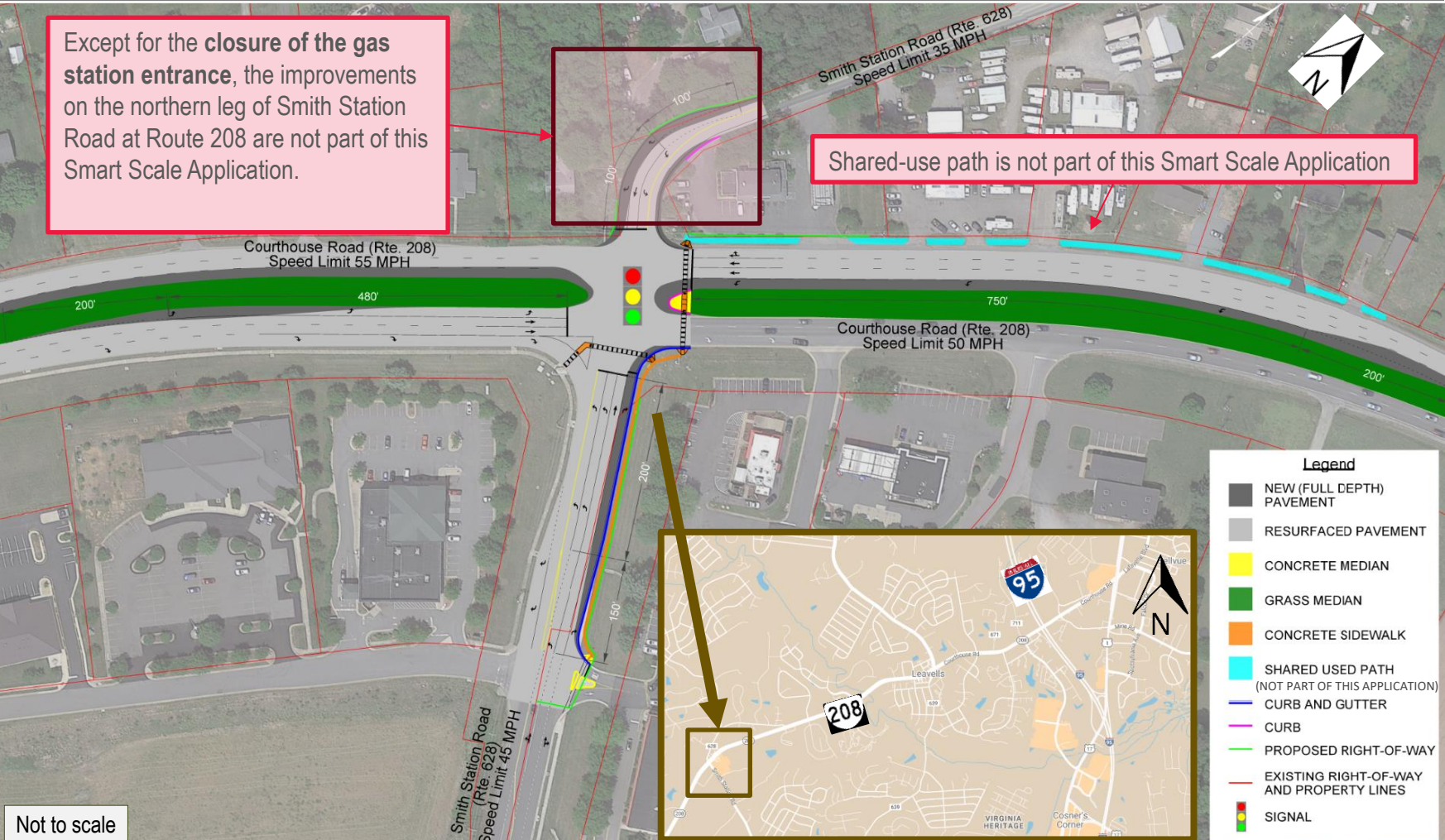
- Pedestrian Access**
- Bicycle Access**

- Proposed crosswalks would address accessibility concerns for pedestrians and bicyclists.
- As a result of the proposed roadway improvements, traffic delays are expected to significantly drop by year 2052.
- Closing the entrance of the gas station on the northern leg of Route 208/Smith Station Road would enhance safety by reducing crash risks. Other safety improvements from various enhancements are shown in table below.

Safety Improvement	Targeted Crash Type	Prospective Reduction Rate of Crashes
Extend turn lanes	-	15%
Construct Sidewalk	Pedestrian	40%
Improve at-grade crossing	Pedestrian	40%
Optimize signals	-	4%
Add a westbound through lane	-	11%

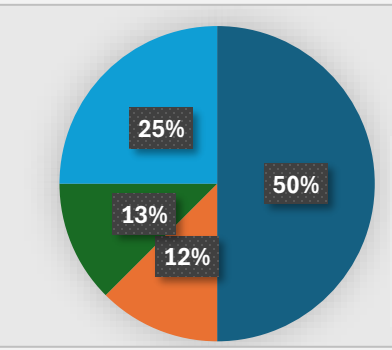
VTRANS	NEEDS
Very High Priority	Bicycle Access, Safety Improvement, Transportation Demand Management
High Priority	Pedestrian Access, Pedestrian Safety Improvement

Preferred Alternative for Route 208 and Smith Station Road Intersection



Public Survey Results

- #### Survey Summary
- The PublicInput survey ran between March 18 and April 1, 2024 (14 days)
 - Survey include 924 participants



- #### Respondents Fields of Concern Route 208 / Smith Station Road
- Congestion
 - Safety
 - Pedestrian Safety
 - Accessibility

- Congestion (50%):** Concerns about reducing traffic congestion and improving commute times. Noted issues near Courtland High School and difficulty accessing local businesses. Suggested adding dual left-turn lanes and widening the southbound approach to alleviate traffic.
- Safety (12.5%):** Emphasized the need for improvements due to heavy traffic, student drivers, and projected growth in the area.
- Pedestrian Safety (12.5%):** Importance of increasing pedestrian access. Suggested reallocating funds from cost-effective alternatives to enhance pedestrian infrastructure.
- Accessibility (25%):** Emphasized the need for efficient solutions that provide value for money and improve overall accessibility for all road users.



ROUTE 208 (COURTHOUSE ROAD) Phase II – Preferred Alternative for Route 208 and Leavells Road Intersection

FROM WOODLAND DRIVE TO BLOOMSBURY LANE

PROJECT DESCRIPTION

Existing Deficiencies at Route 208 intersection with Leavells Road:

- Crash Rates: Higher than Spotsylvania/Fredericksburg average.
- Capacity Issues: Long queues and unacceptable levels of service (LOS).

Proposed Improvements at Route 208 intersection with Leavells Road:

- Add left-turn lanes on the northbound, southbound, and westbound approaches to convert them to dual left-turns.
- Convert the existing shared through/left turn lane on the northbound approach to through lane.
- Extend the left-turn taper and storage lanes on the eastbound, southbound, and westbound approaches.
- Extend the right-turn taper and storage lane on the northbound approach.
- Construct a 3rd westbound through lane on Route 208 from Woodland Drive to Leavells Road
- Construct a shared-use path along north side of Route 208, from Leavells Road to Millgarden Drive.

PROJECT BENEFITS

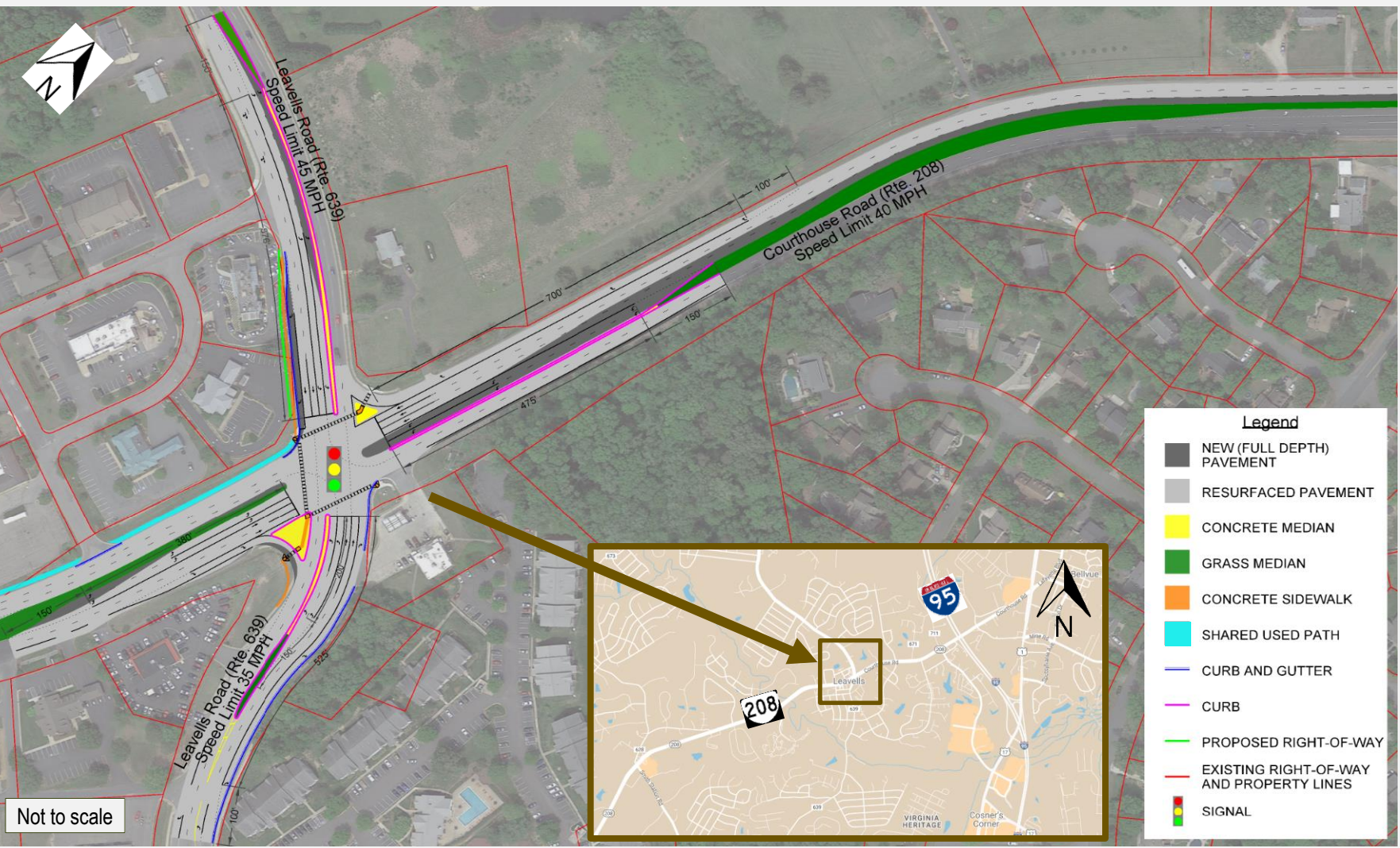


- Proposed shared-use path would increase pedestrian and bicycle accessibility.
- As a result of proposed roadway improvements, traffic delays are expected to significantly drop by year 2052.
- Proposed improvements are expected to reduce crashes, as shown in the table below.

Safety Improvement	Targeted Crash Type	Reduction Rate of Fatal and Injury Crashes
Extend turn lanes	-	15%
Construct sidewalk	Pedestrian	40%
Construct SUP	Pedestrian, Bicyclist	40%
Optimize signals	-	4%
Add a westbound through lane	-	9%

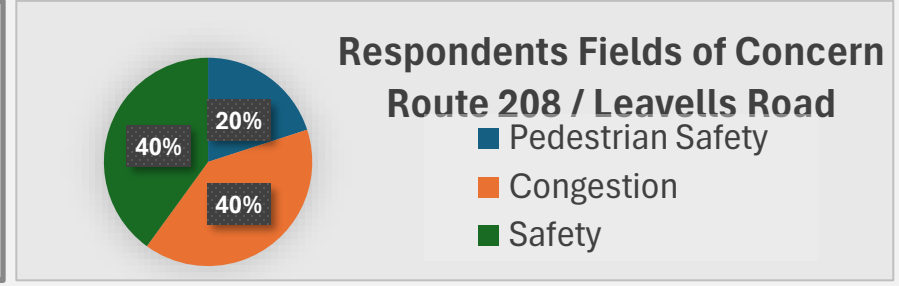
VTRANS	NEEDS
Very High Priority	Bicycle Access, Safety Improvement, Transportation Demand Management
High Priority	Pedestrian Access, Pedestrian Safety Improvement

Preferred Alternative for Route 208 and Leavells Road Intersection



Public Survey Results

- #### Survey Summary
- The PublicInput survey ran between March 18 and April 1, 2024 (14 days)
 - Survey include 924 participants



Congestion (40%): Many respondents highlighted the potential for significant improvements in commute times and traffic flow. Comments emphasized the need to address related issues, such as the merge on the other side of Leavells Road, to ensure comprehensive solutions. Suggestions included synchronized turn lane movements to optimize traffic efficiency.

Safety (40%): Safety concerns were a major theme, with respondents focusing on the hazardous southbound merge near Breezewood Apartments. Comments also highlighted the need for better public transportation and questioned the effectiveness of expensive improvements for minimal time savings. Eliminating the problematic merge lane was a frequently mentioned solution to prevent accidents and improve overall safety.

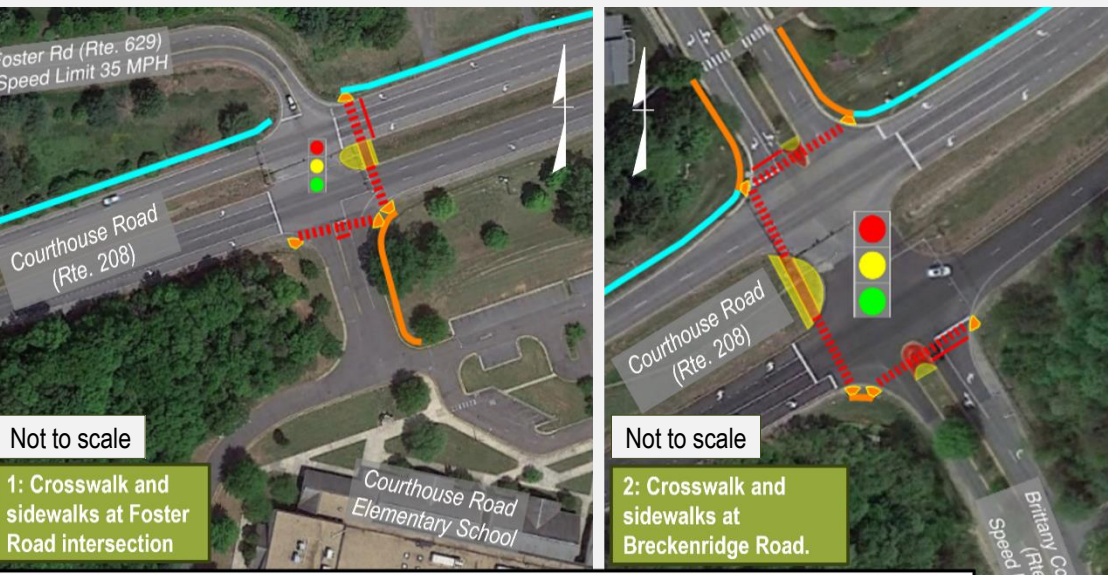
Pedestrian Safety (20%): Some comments addressed the need for better pedestrian infrastructure, such as sidewalks, to ensure the safety of pedestrians in the area. These improvements are seen as crucial for creating a safer environment for all road users.

ROUTE 208 (COURTHOUSE ROAD), ADDITIONAL IMPROVEMENTS NOT APPLIED FOR IN ROUND 6 OF SMART SCALE FROM WOODLAND DRIVE TO BLOOMSBURY LANE



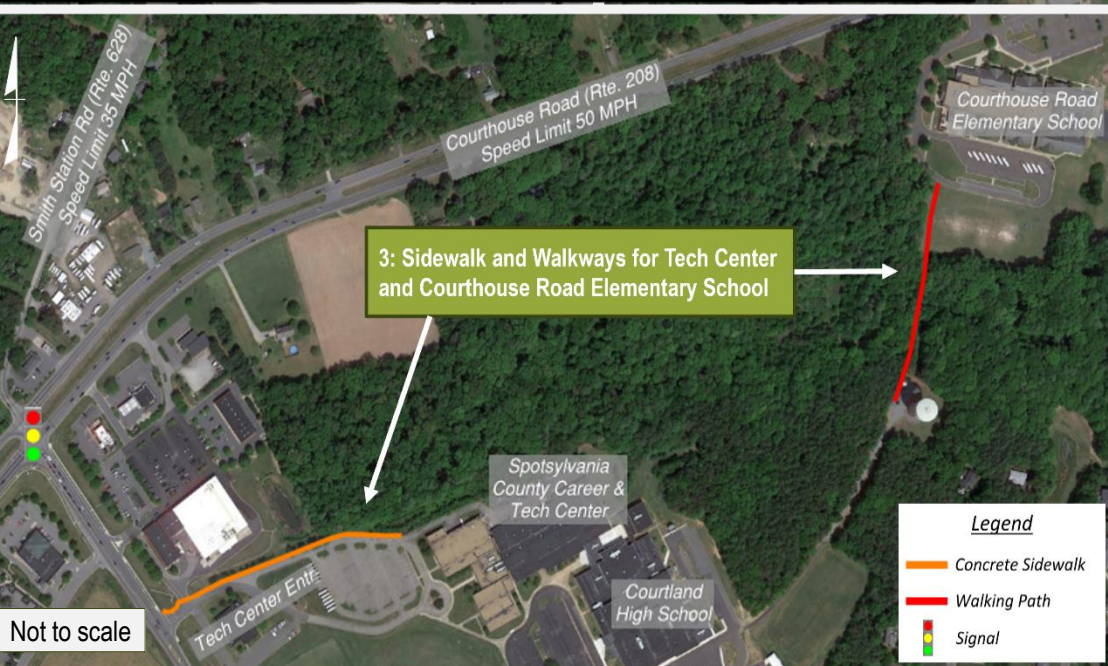
None-SUP Bike and Pedestrian Improvements

Install crosswalks and pedestrian signal heads at the Route 208 intersections with Foster Road (1) and Breckenridge Drive (2), with connections to Courthouse Elementary School, and extensions on the northeast side of Breckenridge Drive. Extend the sidewalks in the southeast quadrant at Smith Station Road (3) and southwest quadrant at Leavells Road (4), enhancing access to residential areas and the Tech Center. Additionally, link Courtland High School's walkway directly to Courthouse Elementary School.



Legend

- Crosswalk
- New Median
- Relocated Stop Bar
- Concrete Sidewalk
- Median Removal
- SUP, Part of Separate Improvements
- Signal



Legend

- Concrete Sidewalk
- Walking Path
- Signal

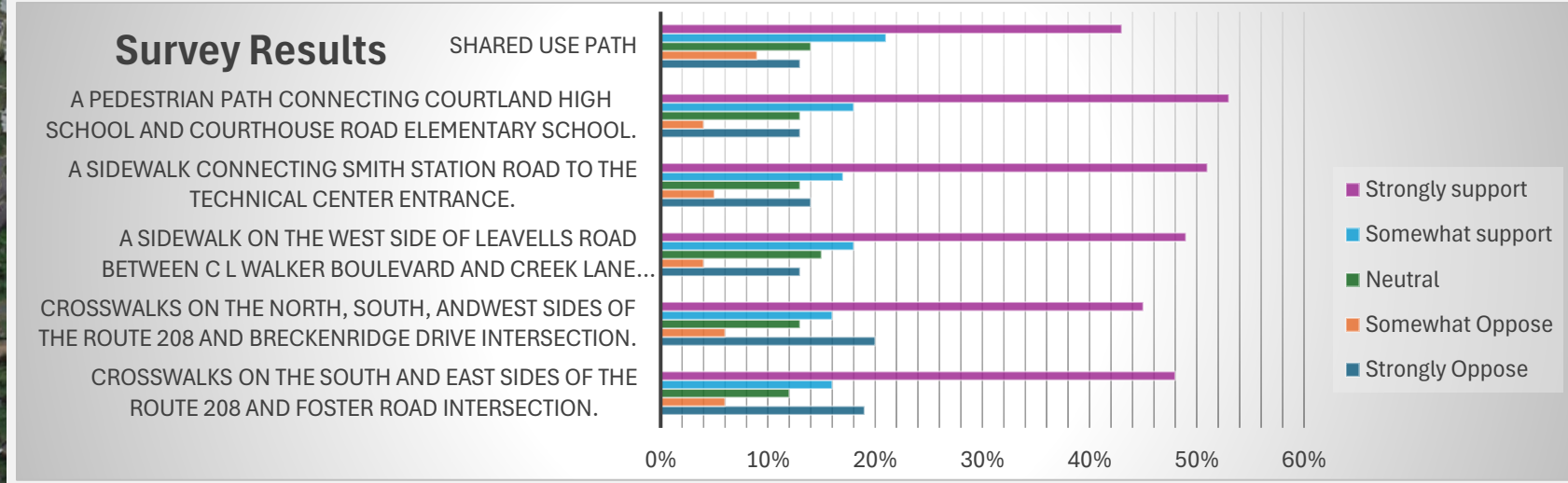
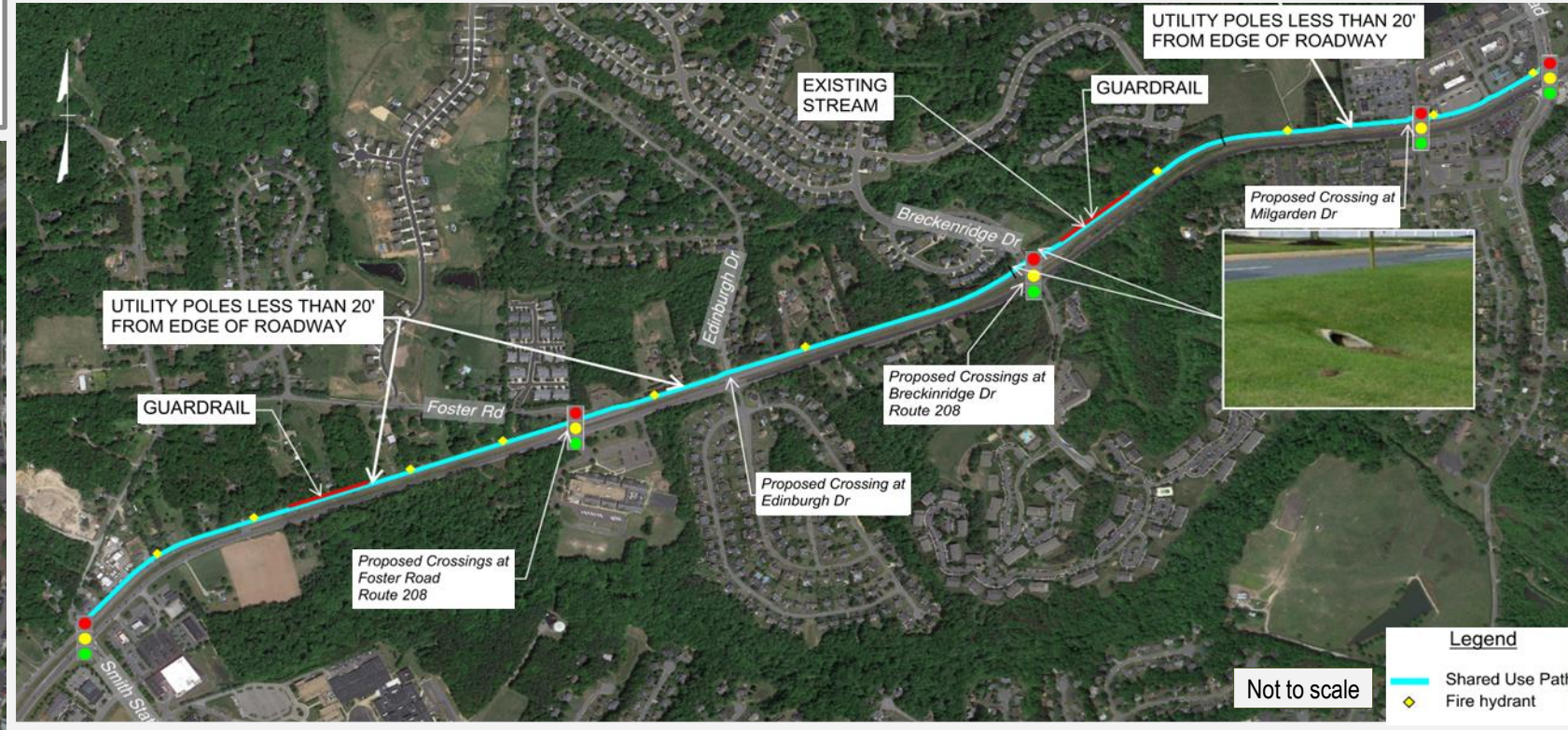


Legend

- Concrete Sidewalk
- Signal

Proposed Shared-Use Path (SUP)

Construct a Shared-Use Path (SUP) along Route 208's north side between Millgarden Drive and Smith Station Road. The County's Trailway Master Plan includes this future SUP, facilitating the proposed SUP application in this study.



The survey results indicate varying levels of support for pedestrian infrastructure projects, with the highest backing observed for a pedestrian path connecting Courtland High School and Courthouse Road Elementary School. Less support, with mixed reactions, is seen for the installation of crosswalks at Route 208 intersections, particularly at Breckenridge Drive and Foster Road.