

Phase 2 – Preferred Alternative

US 460/US 13 (S Military Highway) and US 17 (George Washington Highway) Dual Left Turn Lanes



Project Description

The improvements proposed at this location include:

- 1) **Dual Eastbound and Westbound Left-Turn Lanes**
 - Add a second left-turn lane in the eastbound and westbound directions
 - Convert the eastbound and westbound flashing yellow arrow phasing to protected left-turn phasing. Northbound and southbound left turns will maintain flashing yellow arrow phasing.
- 2) **Remove Channelized Right-Turn Lanes**
 - Tie all channelized right-turn lanes into S Military Highway and George Washington Highway to bring right-turn movements to the main intersection
- 3) **Shared-Use Path**
 - Remove the service road and construct a shared-use path along the south side of the east leg of S Military Highway

Project Needs

The preferred alternative addresses VTrans needs relating to vehicular and pedestrian safety, congestion mitigation, and bicycle access

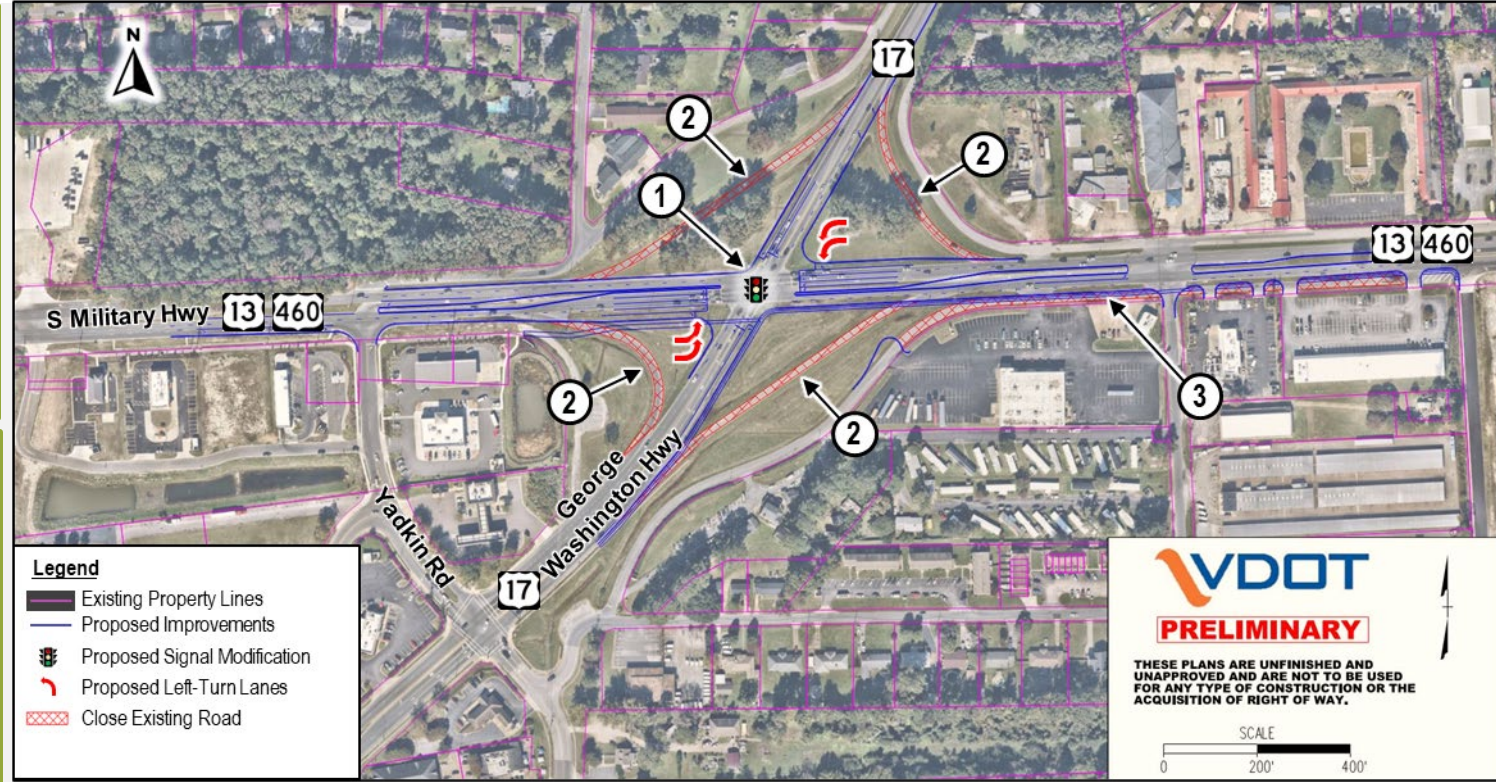
Needs and Priorities

	Congestion Mitigation	Medium		Pedestrian Safety Improvement	Low
	Bicycle Access	High		Pedestrian Access	No Need
	Reliability	Low		Transit Access	High
	Safety Improvement	Very High		Transportation Demand Mgmt.	Very High

Project Benefits

The preferred alternative provides the following benefits:

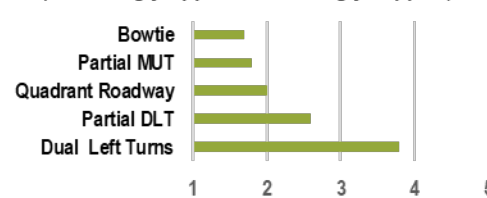
- Enhanced safety for left-turning vehicles along S Military Highway
- Reduced congestion and queuing at the intersection of S Military Highway and George Washington Highway
- Improved safety and connectivity for pedestrians and bicyclists along S Military Highway



Public Input Survey Summary

- The Public Input survey ran between March 6, 2024 and March 20, 2024 (15 days)
- Survey included 520 participants and 570 comments
- Many respondents expressed concern with complicated innovative intersection concepts
- Participants ranked the dual left-turns concept as the most favorable, with 70% showing somewhat support or strong support

Average Rating
(1 = Strongly Oppose, 5 = Strongly Support)



Dual Left Turns Concept Ratings

