

# Phase 2 – Project 1: Multimodal Safety and Access Improvements

## Bainbridge Boulevard and South Military Highway (US 460/US 13)



### Project Description

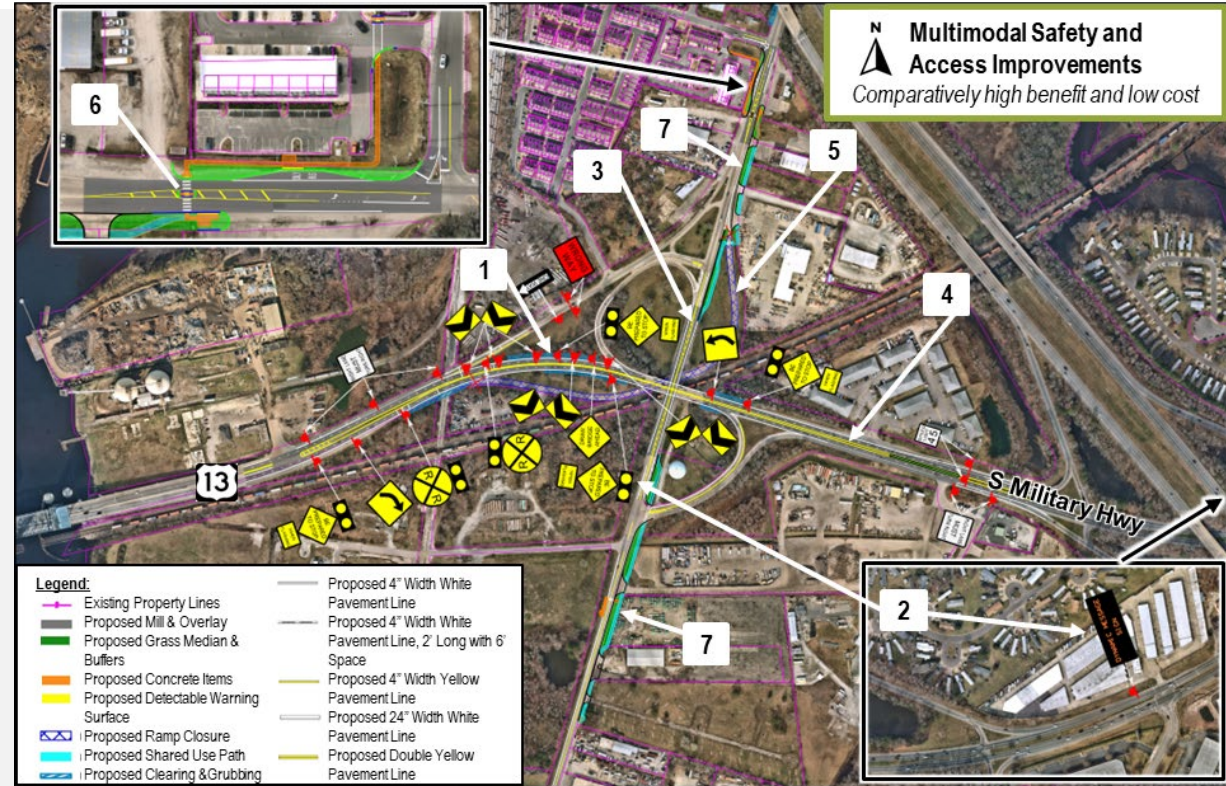
The improvements proposed at this location include:

- 1) Sight Distance Improvements along South Military Highway
- 2) Signage and DMS Improvements along South Military Highway
- 3) Pavement Marking Improvements along Bainbridge Boulevard
- 4) Pavement Marking Improvements along South Military Highway
- 5) Eastbound South Military Highway to Northbound Bainbridge Boulevard Ramp Closure
- 6) Bus Stop Improvement along Bainbridge Boulevard
- 7) Bainbridge Boulevard Shared Use Path

### Project Needs

The preferred alternative addresses VTrans needs relating to vehicular and pedestrian safety, congestion mitigation, bicycle access, transit access, and transportation demand management.

Needs and Priorities			
Congestion Mitigation	Low	Pedestrian Safety Improvement	Low
Bicycle Access	High	Pedestrian Access	No Need
Reliability	Low	Transit Access	Low
Safety Improvement	High	Transportation Demand Mgmt.	Very High



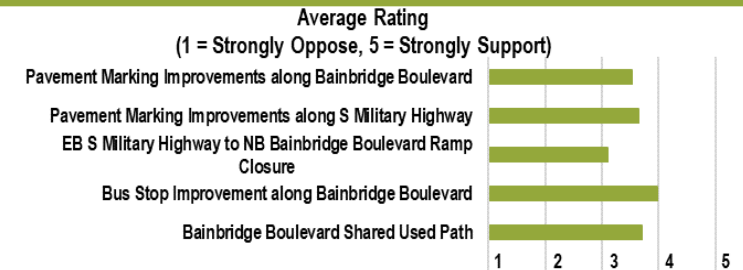
### Project Benefits

The preferred alternative provides the following benefits:

- Enhanced safety with reduction of rear-end collisions along South Military Highway.
- Driver awareness and safety benefits through increased conspicuity for drivers along South Military Highway and Bainbridge Boulevard.
- Improves safety and connectivity by providing a separate facility for bicyclists and pedestrians.
- Improves transit facilities and operations by providing accessibility and comfort for transit users.

### Public Input Survey Summary

- The Public Input survey ran between March 6 and March 20, 2024 (15 days)
- Survey included 301 participants and 385 comments
- Many respondents expressed concern with pavement conditions along Bainbridge Boulevard
- Many respondents were in favor with the pavement marking updates if drivers still have access to the businesses through the median opening
- Many respondents were in favor with closing the ramp from EB South Military Highway to NB Bainbridge Boulevard with some suggesting to remove the ramp completely.
- Many respondents noted that having a shared-use paths are only helpful in areas where it is needed. Respondent would add that there are not enough businesses and communities to support it





# Phase 2 – Project 2: New Park & Ride/Commuter Lot

## Bainbridge Boulevard and South Military Highway (US 460/US 13)



### Project Description

The improvements proposed at this location include:

- 1) Whitfield Lane Shared-Use Path
- 2) Park & Ride Access and Ramp Access Improvements

### Project Needs

The preferred alternative addresses VTrans needs relating to vehicular and pedestrian safety, congestion mitigation, bicycle access, transit access, and transportation demand management.

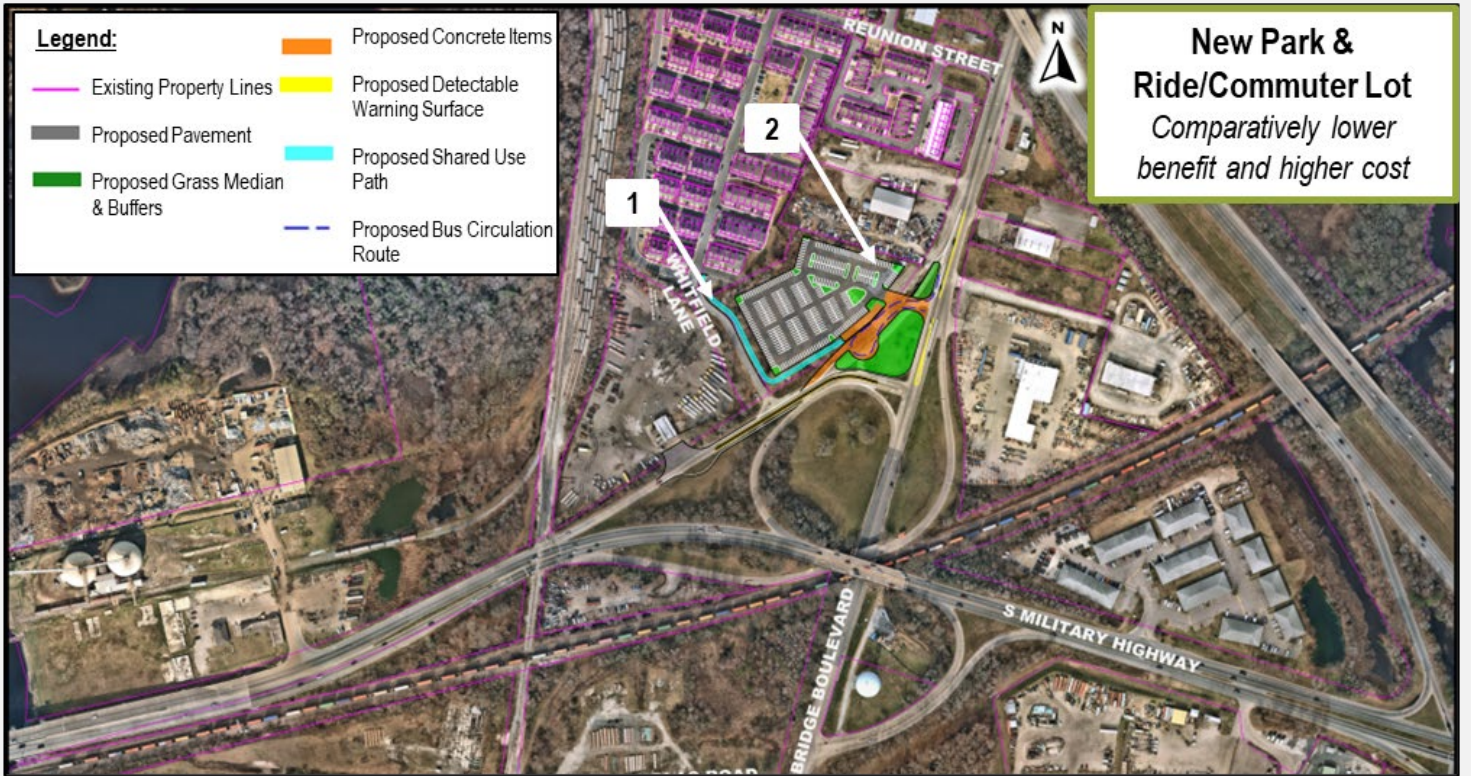
#### Needs and Priorities

	Congestion Mitigation	Low		Pedestrian Safety Improvement	Low
	Bicycle Access	High		Pedestrian Access	No Need
	Reliability	Low		Transit Access	Low
	Safety Improvement	High		Transportation Demand Mgmt.	Very High

### Project Benefits

The preferred alternative provides the following benefits:

- Enhanced safety with reduction of rear-end collisions along South Military Highway.
- Improves safety and connectivity by providing a separate facility for bicyclists and pedestrians.
- Improves transit facilities and operations by providing accessibility and comfort for transit users.



### Public Input Survey Summary

- The Public Input survey ran between March 6 and March 20, 2024 (15 days)
- Survey included 301 participants and 385 comments
- Many respondents expressed interest with a shared use path along Whitfield Lane, but there is quicker access to the existing bus stop through Reunion Street. With the proposed new bus stop location, Whitfield Lane would be more appealing, direct, and be further away from traffic.
- Many respondents noted concern for the utilization of the lot and maintaining public safety

