

Phase 2 – Preferred Alternative

Route 17 (George Washington Memorial Highway) and Route 171 (Victory Boulevard) Conventional



Project Description

The improvements proposed at this location include:

- 1) **Additional Eastbound Left-Turn and Through Lanes**
 - Widen eastbound Victory Boulevard and shift channelized right-turn lane south
 - Add third eastbound receiving lane that merges down to two eastbound lanes east of the main intersection
- 2) **Additional Northbound and Southbound Through Lanes**
 - Widen north- and southbound Route 17 and shift southbound channelized right-turn lane west

Project Needs

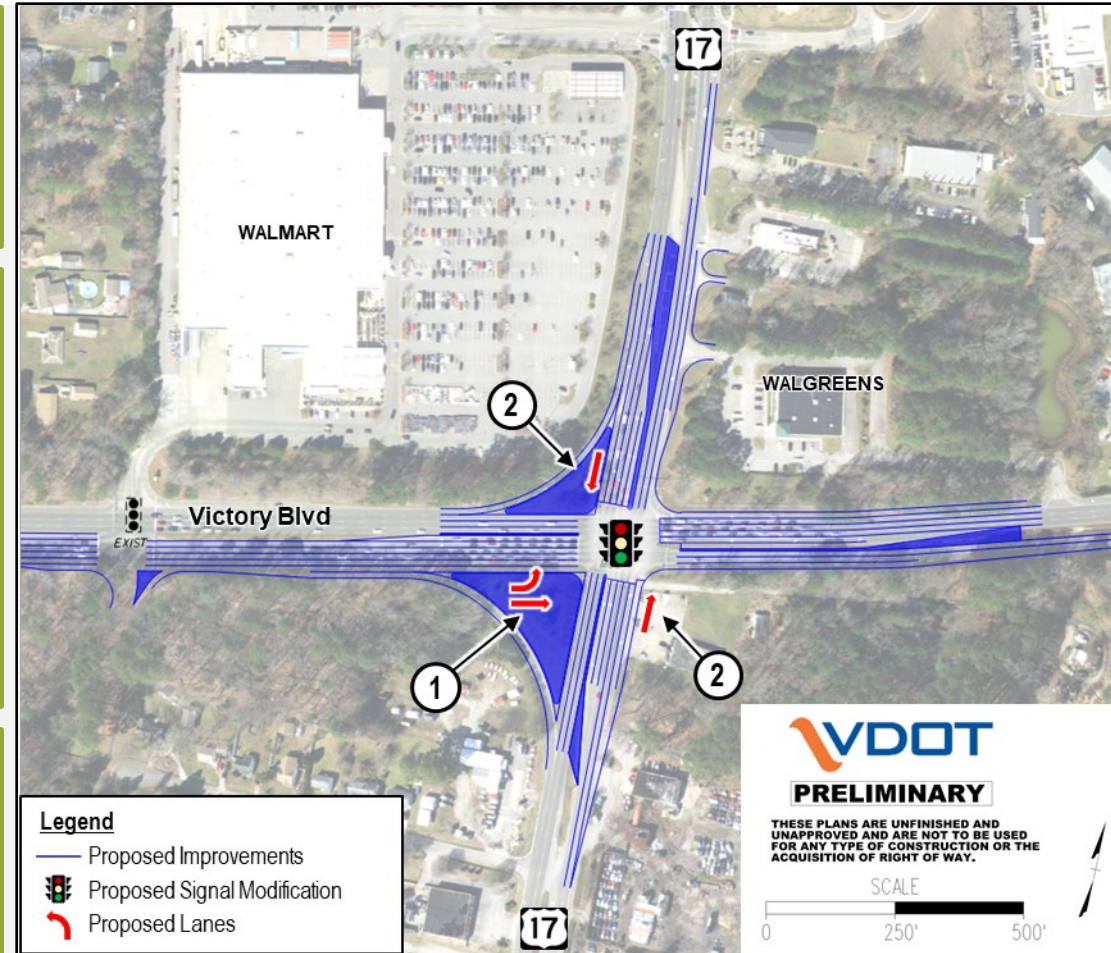
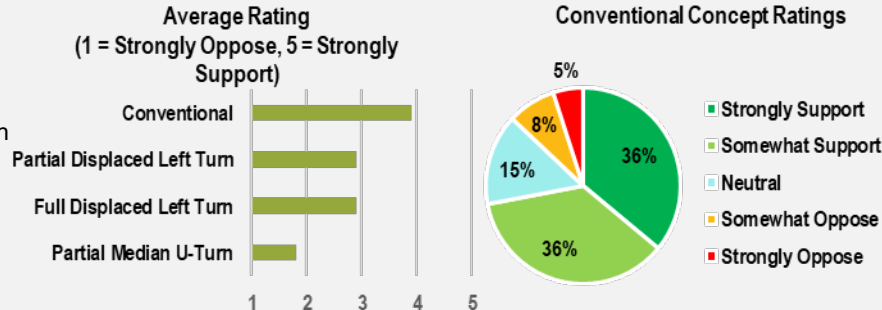
The preferred alternative addresses VTrans needs relating to congestion mitigation, vehicle safety, capacity preservation, and transportation demand management.

Needs and Priorities

Congestion Mitigation	High	Capacity Preservation	Very High
Bicycle Access	High	Pedestrian Access	Medium
Reliability	Medium	Transit Access	Low
Safety Improvement	High	Transportation Demand Mgmt.	Very High

Public Input Survey Summary

- Public Input survey ran between March 8, 2024 and March 22, 2024 (15 days)
- Survey included 2,606 participants and 2,755 comments
- Many respondents expressed concern with complicated innovative intersection concepts
- Participants ranked the conventional concept as the most favorable, with 72% showing somewhat support or strong support



Project Benefits

The preferred alternative provides the following benefits:

- Enhanced safety at the intersection of Route 17 and Victory Boulevard
- Reduced congestion and queuing at the intersection of Route 17 and Victory Boulevard