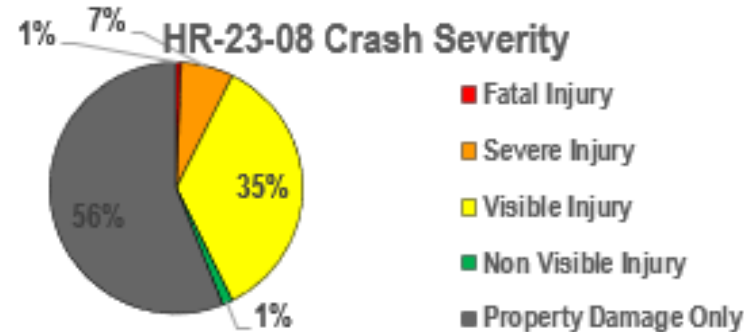


Phase 1 Executive Summary



Vtrans Needs

NEED	PRIORITY
Transportation Demand Management (RN)	Very High
Transit Access (RN)	Very High
Bicycle Access (RN)	High
Construction District Safety Improvement	High
Statewide Safety Improvement	High
Congestion Mitigation (RN)	Low
Reliability (RN)	Low
Pedestrian Safety Improvement	Low
Transportation Demand Management (RN)	Low
Transit Access for Equity Emphasis Areas (RN)	Low



Transit and TDM Needs

- HRT Route 58 has one stop in the northernmost region of the study area and one stop south of the study area. Neither have pedestrian connections
- HRT Route 57 travels through the study area on S Military Highway but does not stop within the study area
- Nearest park & ride is 7 miles north
- Need to improve access to existing facilities and improve access to Route 57
- Need to increase transportation mode choices for users

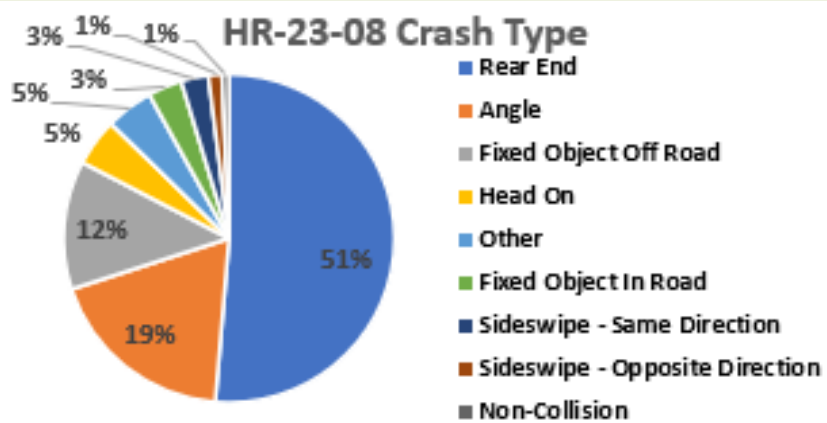
Operations and Safety Needs

- Drivers were observed going lower than the speed limit along S Military Highway in both directions.
- Congestion may begin along S Military Highway during peak hours, with the opening of the Gilmeron Bridge, railroad crossings and crashes.
- A high frequency of crashes (150 in the last 5 years) resulted in this being identified as a Statewide and a District **High** priority area
- S Military Highway crash rate is 242 per 100 MVMT, as compared to a statewide average of 106 per 100 MVMT for similar roads.
- VDOT's Top Potential Safety Improvement (PSI) Segments and Intersections list includes S Military Highway within the study area
- Observations during the site visit include:
 - Missing and damaged signs
 - Standing water on roadway (Bainbridge Boulevard)
 - Faded pavement markings and damage to the roadway
- Need for safety improvements to reduce frequency of congestion related crashes

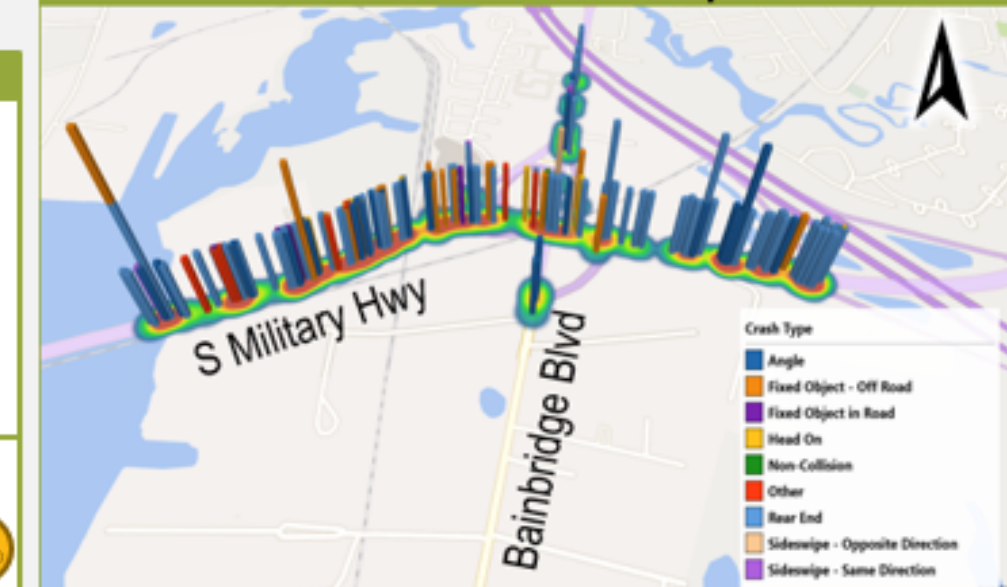
Bike and Pedestrian Access Needs

- **High** bike access priority along S Military Highway with high industrialized land use.
- No bike and pedestrian facilities within study area, except disconnected sidewalk facility under Triple Decker Bridge
- Study area mostly consists of commercial and industrial land uses with residential development in northwest quadrant
- Multimodal infrastructure planned west of the study area on S Military Highway in Deep Creek Village.
- CTP includes bike lanes on Bainbridge Boulevard and multi-use path on S Military Highway
- VDOT has S Military Highway as top 1% PSAP priority corridor

HRT Routes 57 and 58



Crash Data Heat Map



Proposed Solutions to Evaluate in Phase 2



Operations Improvements

- 1 2-way travel on access ramp
- 2 Increase turn radius for buses
- 3 Remove emergency only from Whitfield Lane

Transit Access/TDM Improvements

- 1 Park and ride facility
- 2 Add bus stop
- 3 Add bus pad

Safety Improvements

- 1 Improve sight distance
- 2 Review posted speed limit
- 3 Curve chevrons
- 4 Drawbridge/rail crossing/queue warning

Pedestrian and Bicycle Improvements

- Bicycle/Pedestrian Facility
- Crosswalk