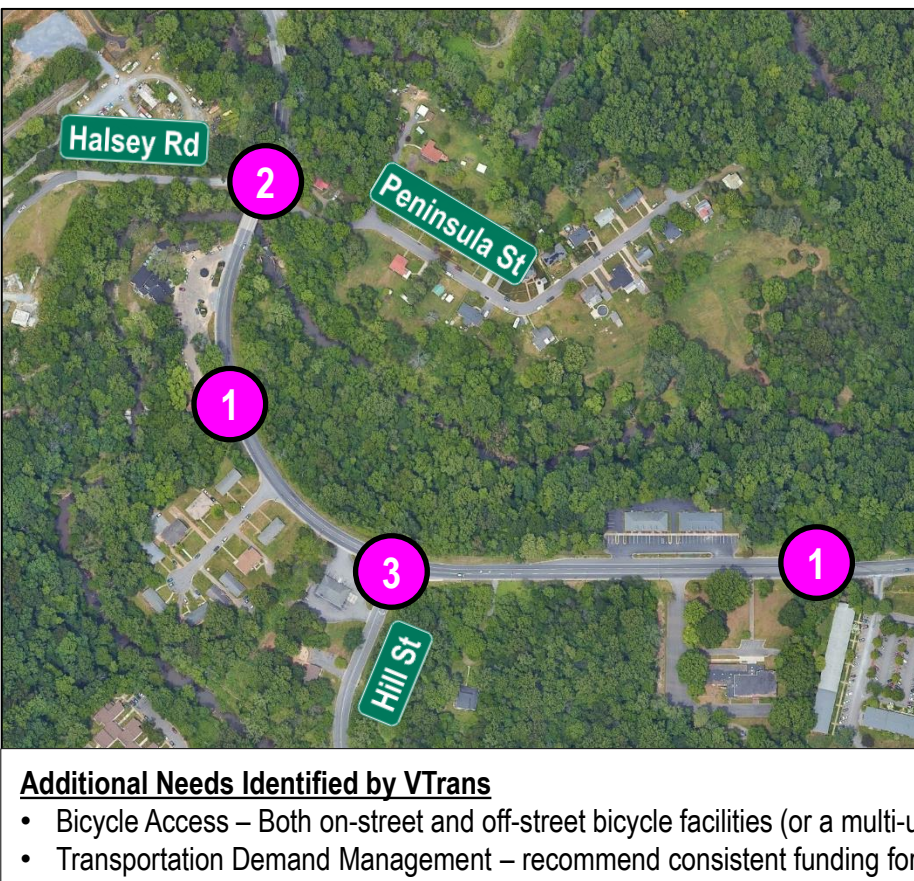
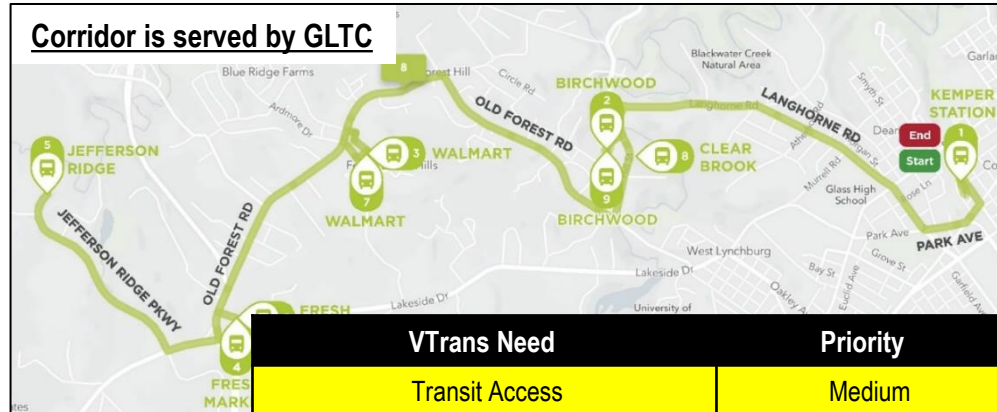
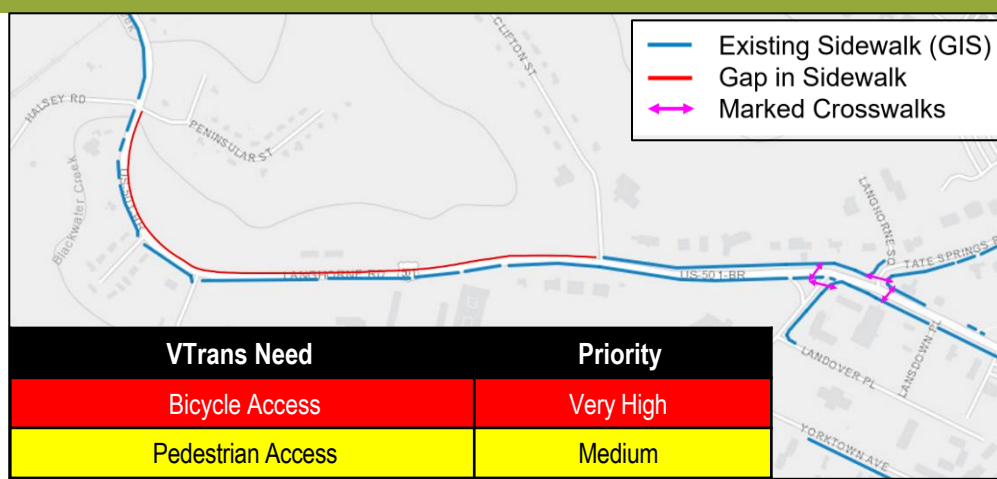
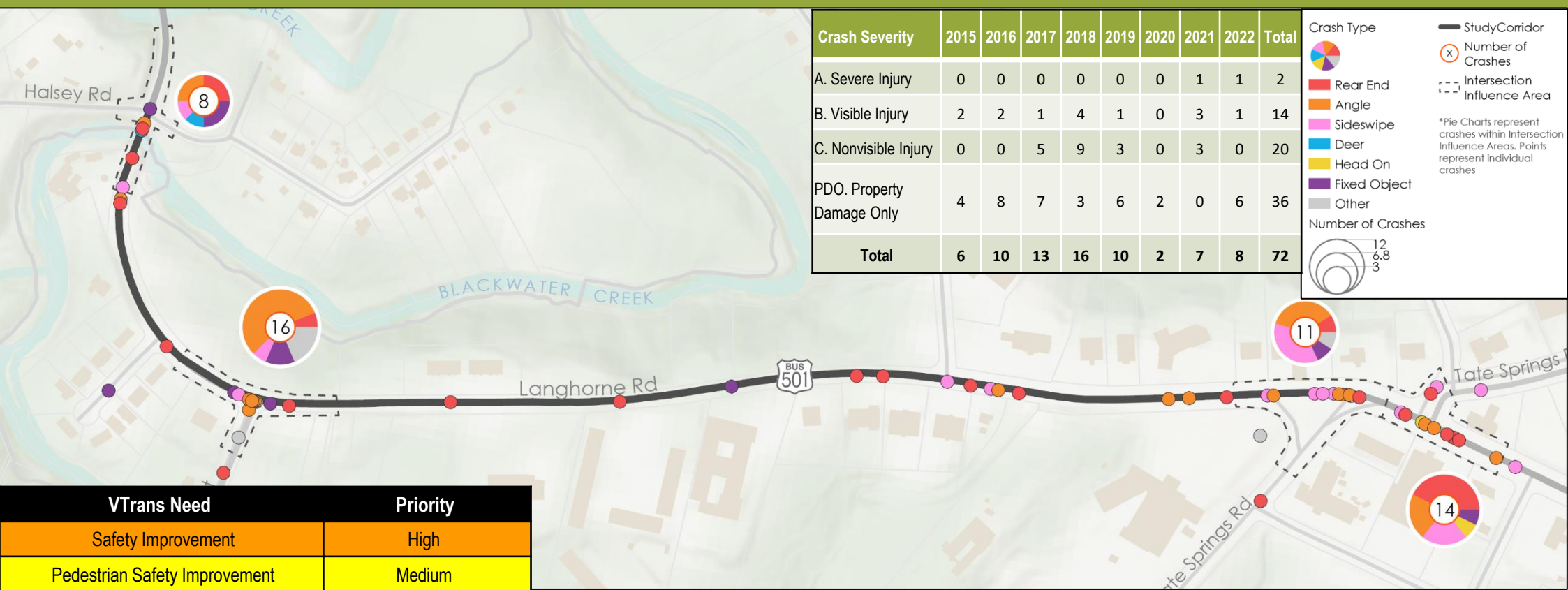


# DIAGNOSIS AND PROBLEM IDENTIFICATION

## VTrans Needs Evaluation and Preliminary Alternatives



- Preliminary Alternatives Carried Forward to Phase 2:**
- Both on-street and off-street bicycle facilities (or a multi-use path) will be investigated.
  - Install crosswalks, upgrade the ramps and install actuated warning signs at the Halsey Road intersection.
  - Install crosswalks and upgrade the ramps at the Hill Street intersection. Options to construct an eastbound right-turn lane and/or a roundabout will be investigated.
  - Install a midblock pedestrian crossing at Clifton Street. This may potentially require a Rectangular Rapid Flashing Beacon (RRFB)
  - A peanut roundabout will be investigated at the Tate Springs Road intersections.

- Offset Intersections** - The signalized Tate Springs Road intersections are closely-spaced and likely less efficient.
- Lack of Bicycle Facilities** - Bicycle lanes are not present along the corridor.
- Pedestrian Accommodations** - Sidewalks are present on the south side of the corridor.
- Rear end crashes likely caused by:**
  - Minimal access management
  - Variable speeds and sudden stops
- Angle crashes likely caused by:**
  - Minimal access management
  - Impatient drivers turning from side streets

**Additional Needs Identified by VTrans**

- Bicycle Access – Both on-street and off-street bicycle facilities (or a multi-use path) will be investigated.
- Transportation Demand Management – recommend consistent funding for RIDE Solutions