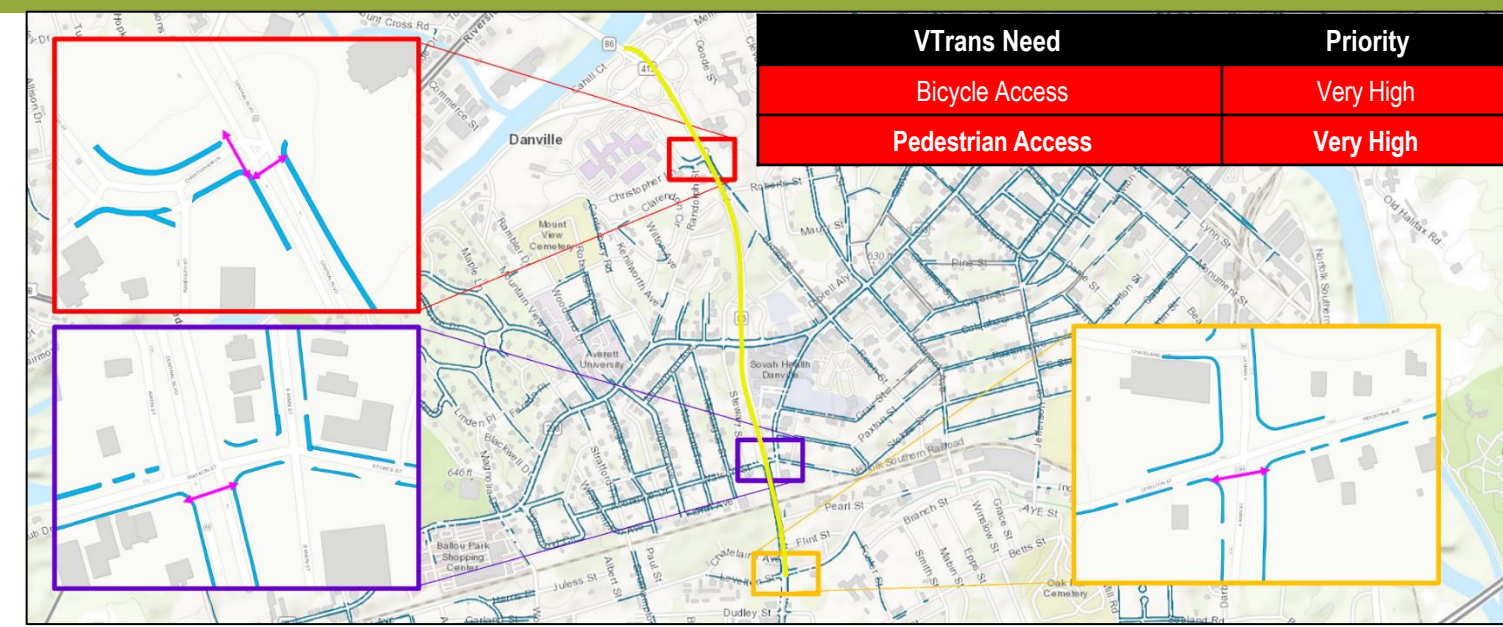
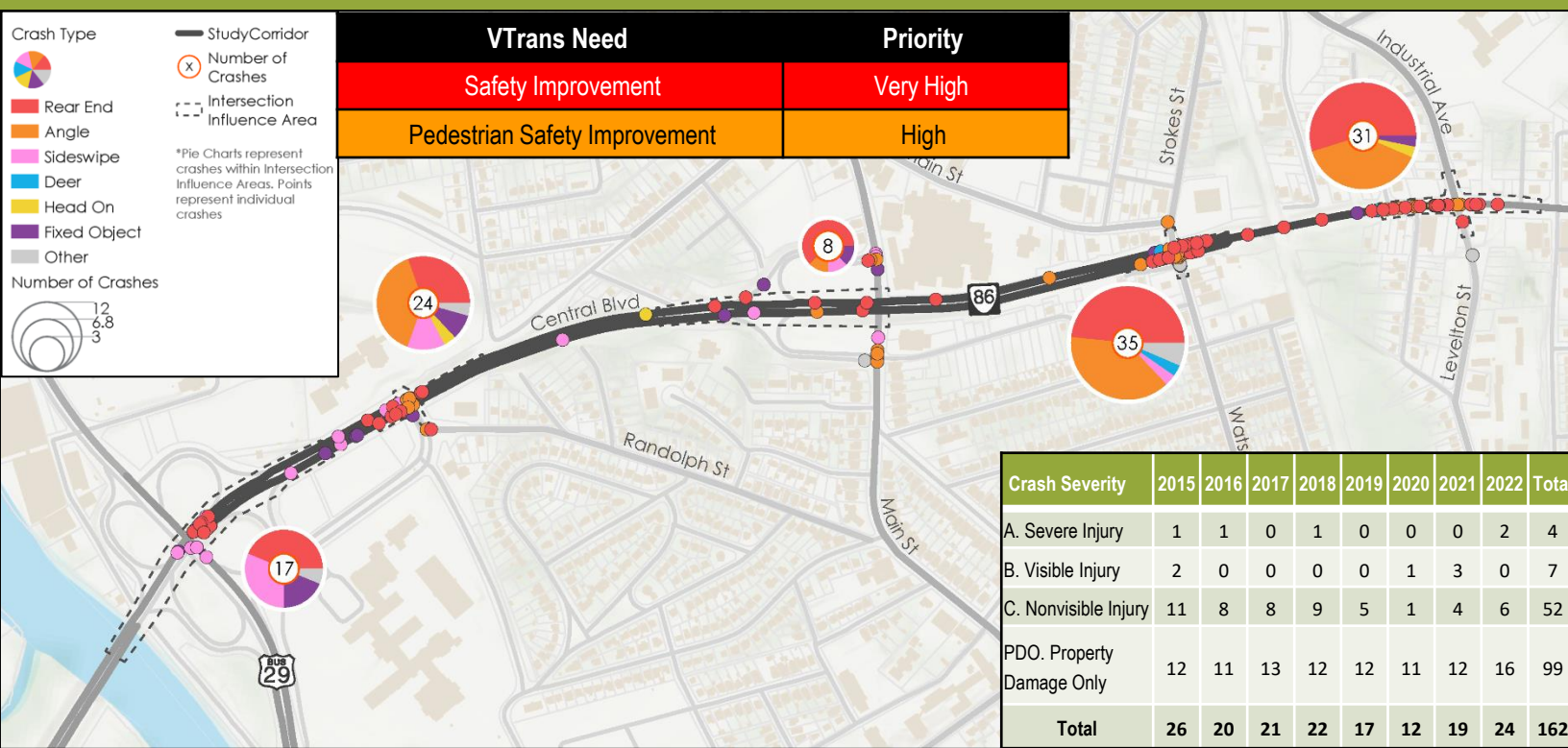


# DIAGNOSIS AND PROBLEM IDENTIFICATION

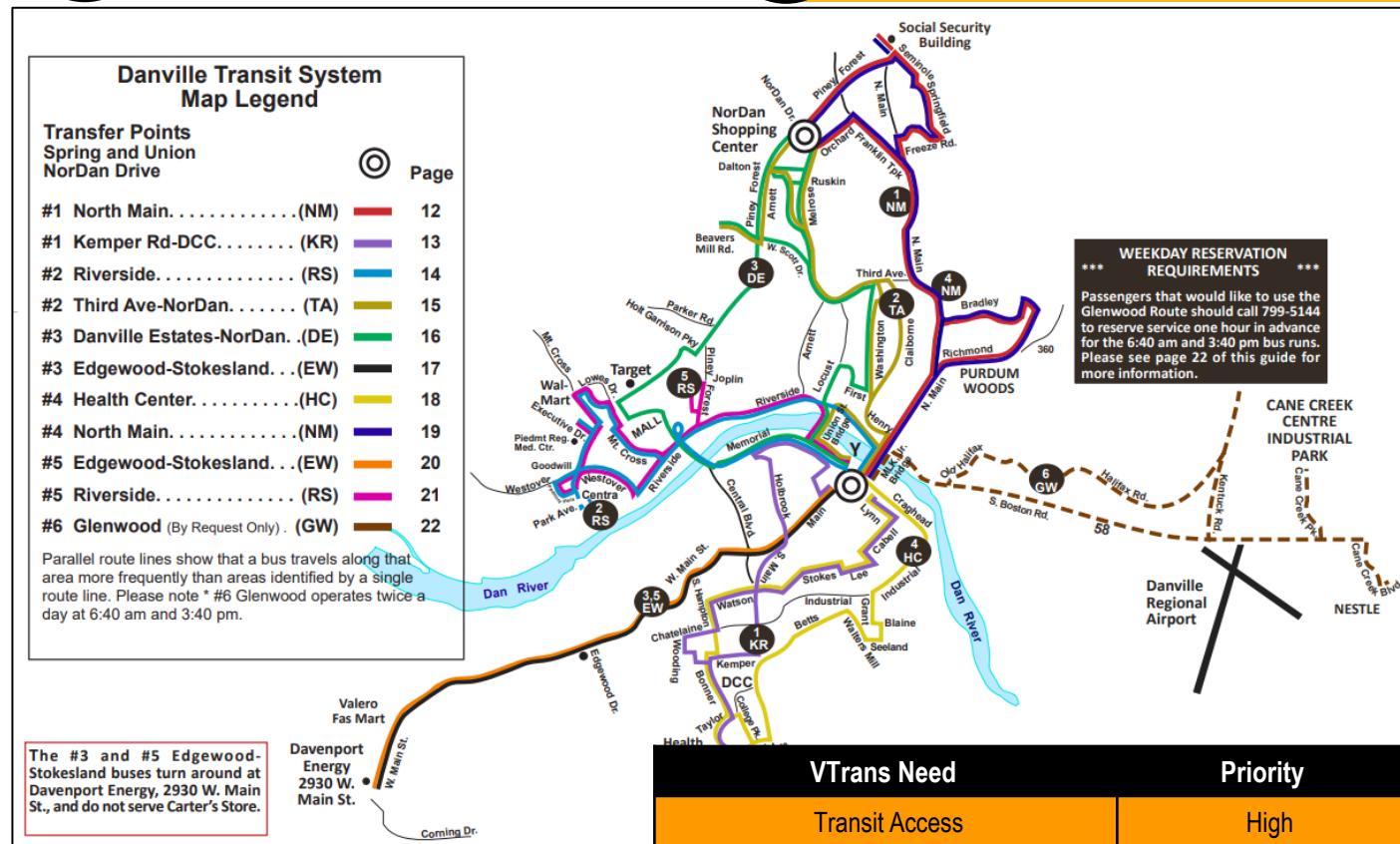
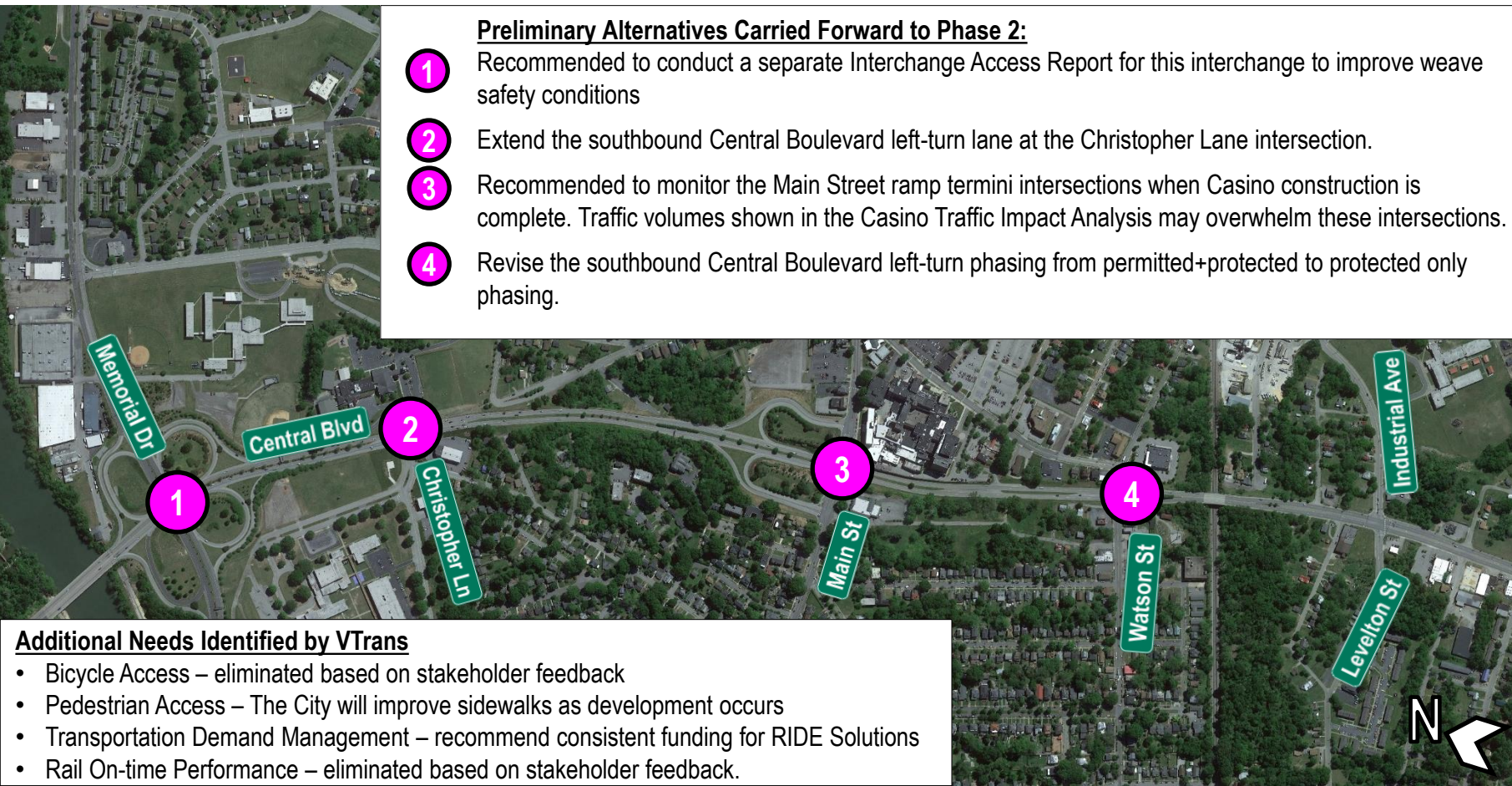
## VTrans Needs Evaluation and Preliminary Alternatives



- Lack of Bicycle Facilities** - Bicycle lanes are not present along the corridor.
- Pedestrian Accommodations** - Sidewalks are not present north of Watson Street, except around the Christopher Lane intersection.
- Future Development** - Caesars Virginia is being constructed on Main Street. - Residential development is anticipated along the corridor.
- Transit Routes** - There are no transit routes along Central Boulevard, within the study area limits.

### Preliminary Alternatives Carried Forward to Phase 2:

- Recommended to conduct a separate Interchange Access Report for this interchange to improve weave safety conditions
- Extend the southbound Central Boulevard left-turn lane at the Christopher Lane intersection.
- Recommended to monitor the Main Street ramp termini intersections when Casino construction is complete. Traffic volumes shown in the Casino Traffic Impact Analysis may overwhelm these intersections.
- Revise the southbound Central Boulevard left-turn phasing from permitted+protected to protected only phasing.



- ### Additional Needs Identified by VTrans
- Bicycle Access – eliminated based on stakeholder feedback
  - Pedestrian Access – The City will improve sidewalks as development occurs
  - Transportation Demand Management – recommend consistent funding for RIDE Solutions
  - Rail On-time Performance – eliminated based on stakeholder feedback.