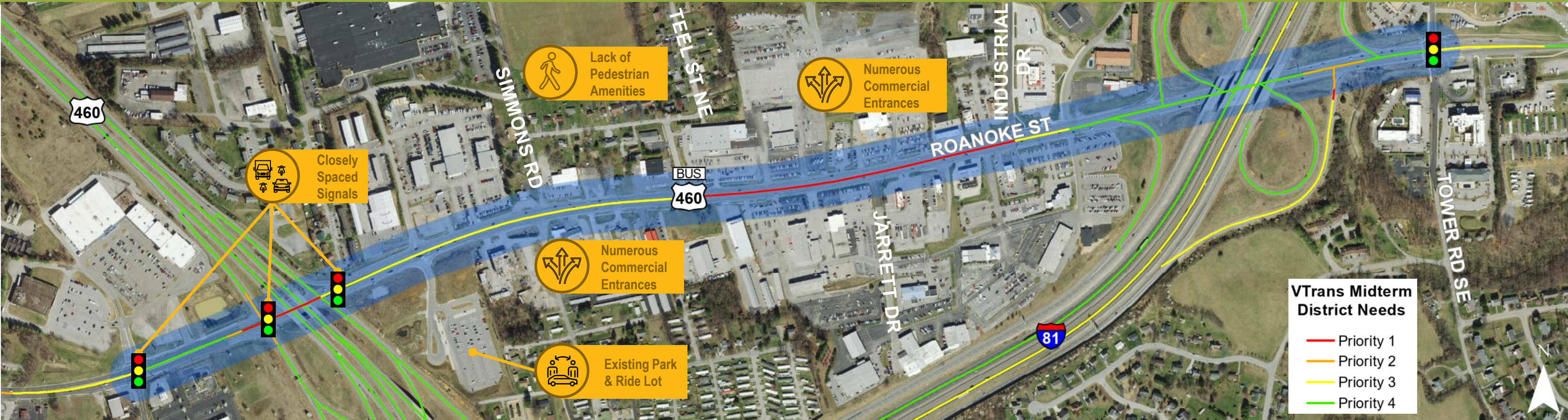


PHASE I - DIAGNOSIS AND PROBLEM IDENTIFICATION

STUDY OVERVIEW



Purpose, Goals, & Objectives

The purpose of this study is to identify recommendations with a focus on improving roadway safety, reliability, IEDA access, multi-modal accessibility/connectivity and TDM needs along the Roanoke Street corridor.

Identify cost-effective improvement alternatives that address the identified transportation needs.

Existing Issues in the Study Area

- Significant number of entrances and poor access management contribute to safety concerns at many locations
- Lack of sidewalks and pedestrian amenities throughout the corridor
- Difficulty making left turns at many locations
- Poor coordination between traffic signals

Study Summary

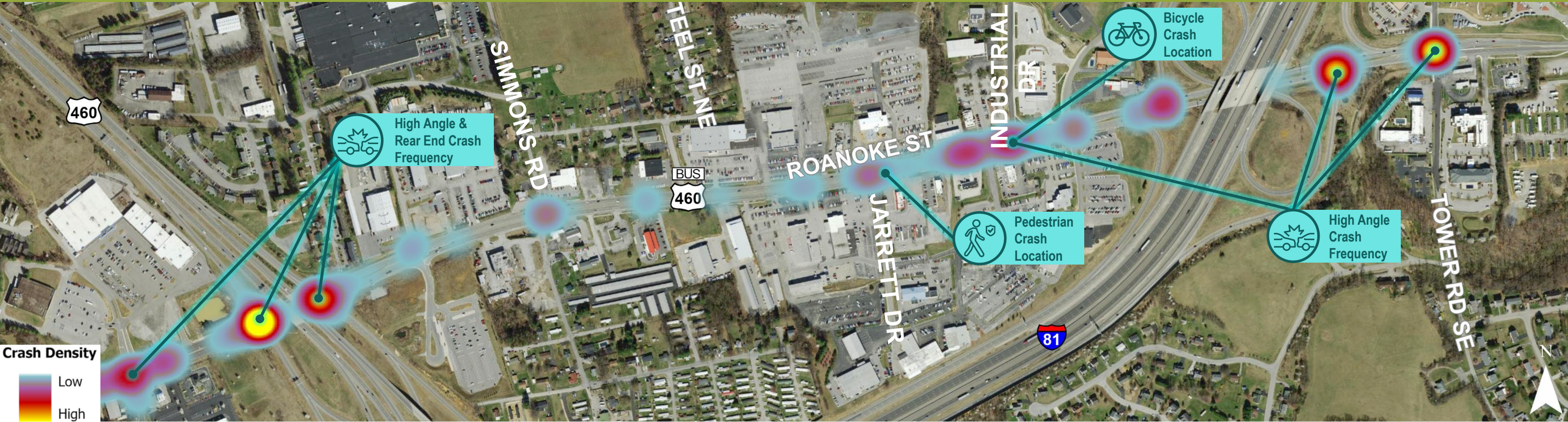
VDOT District	Salem
Locality	Town of Christiansburg
Length	1.41 mile
Study Limits	From Falling Branch Road to Tower Road
Functional Classification	Principal arterial / Corridor of Statewide Significance
Speed Limit	35 MPH

VTrans Needs

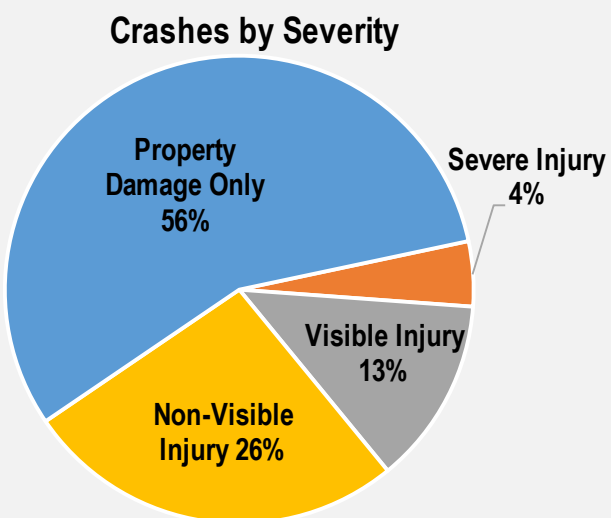
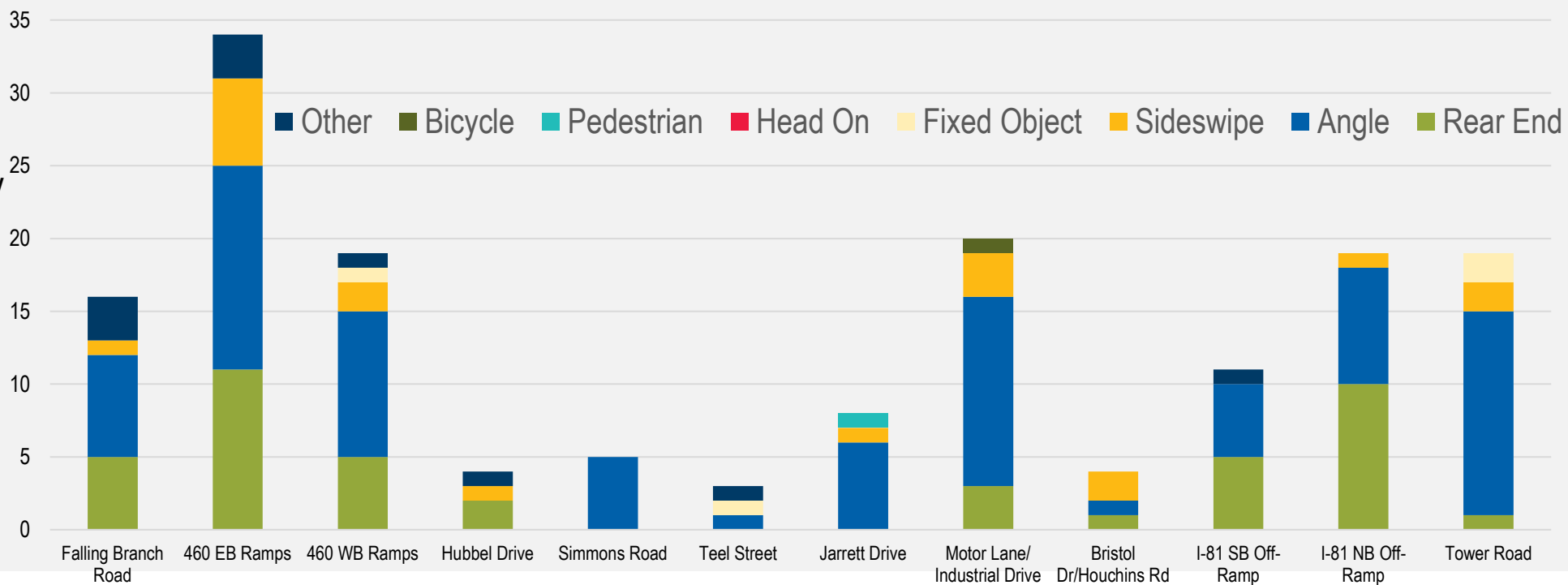
NEED	PRIORITY
IEDA (UDA) Access	Very High
Safety Improvement	Very High
Reliability	Very High
Transportation Demand Management	Very High
Bicycle Access	Medium

PHASE I - DIAGNOSIS AND PROBLEM IDENTIFICATION

TRAFFIC SAFETY NEEDS



2018 – 2022 Crashes at Intersections



Safety Issues in the Study Area

- 53% angle crashes
- 1 pedestrian crash and 1 bicycle crash
- Closely spaced driveways and poor access management between Hubbell Drive and Houchins Road create the potential for crashes
- Poor/lack of signal coordination creates the potential for rear end and angle crashes