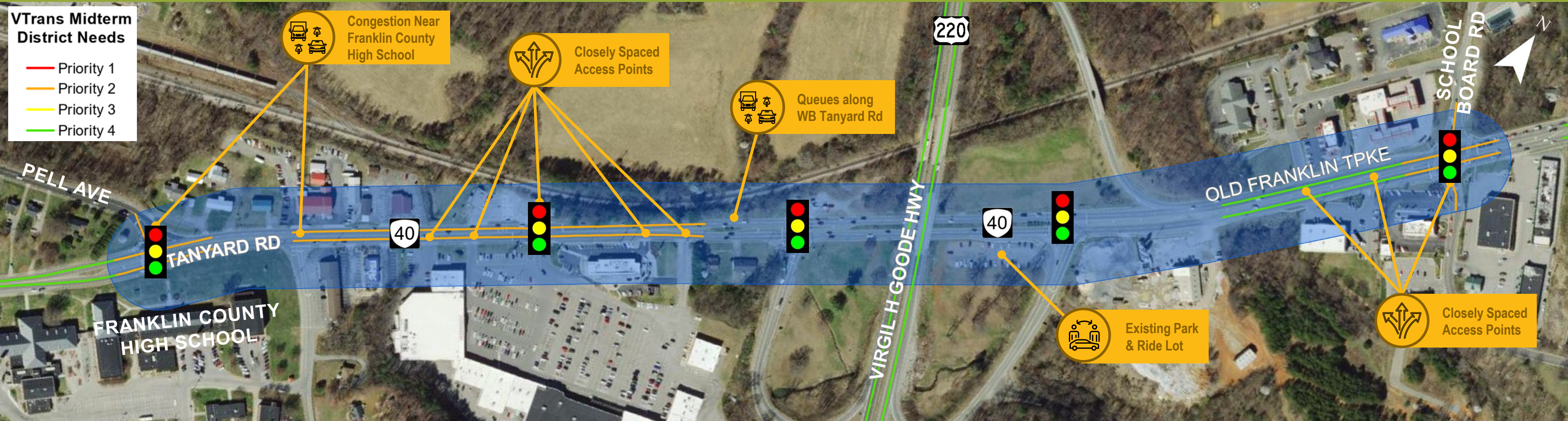


PHASE I - DIAGNOSIS AND PROBLEM IDENTIFICATION

STUDY OVERVIEW



Existing Issues in the Study Area

- Traffic congestion in vicinity of Franklin County High School (Pell Avenue & Perdue Lane intersections)
- Queues in westbound Tanyard Road shared left-turn/through lane west of US 220 occasionally spill back to US 220 Ramps
- Multiple full access entrances near School Board Road signalized intersection

Purpose, Goals & Objectives

The purpose of this study is to identify recommendations to improve safety along the Route 40 (Tanyard Road) corridor within the Town of Rocky Mount.

Identify cost-effective improvement alternatives that address the identified safety needs.

VTrans Needs	
NEED	PRIORITY
Safety Improvement	Very High

Study Summary

VDOT District	Salem
Locality	Town of Rocky Mount
Length	0.74 miles
Study Limits	From Pell Avenue to School Board Road
Functional Classification	Minor arterial
Speed Limit	25 MPH – West of Route 220 SB Ramps 35 MPH – East of Route 220 SB Ramps

PHASE I - DIAGNOSIS AND PROBLEM IDENTIFICATION

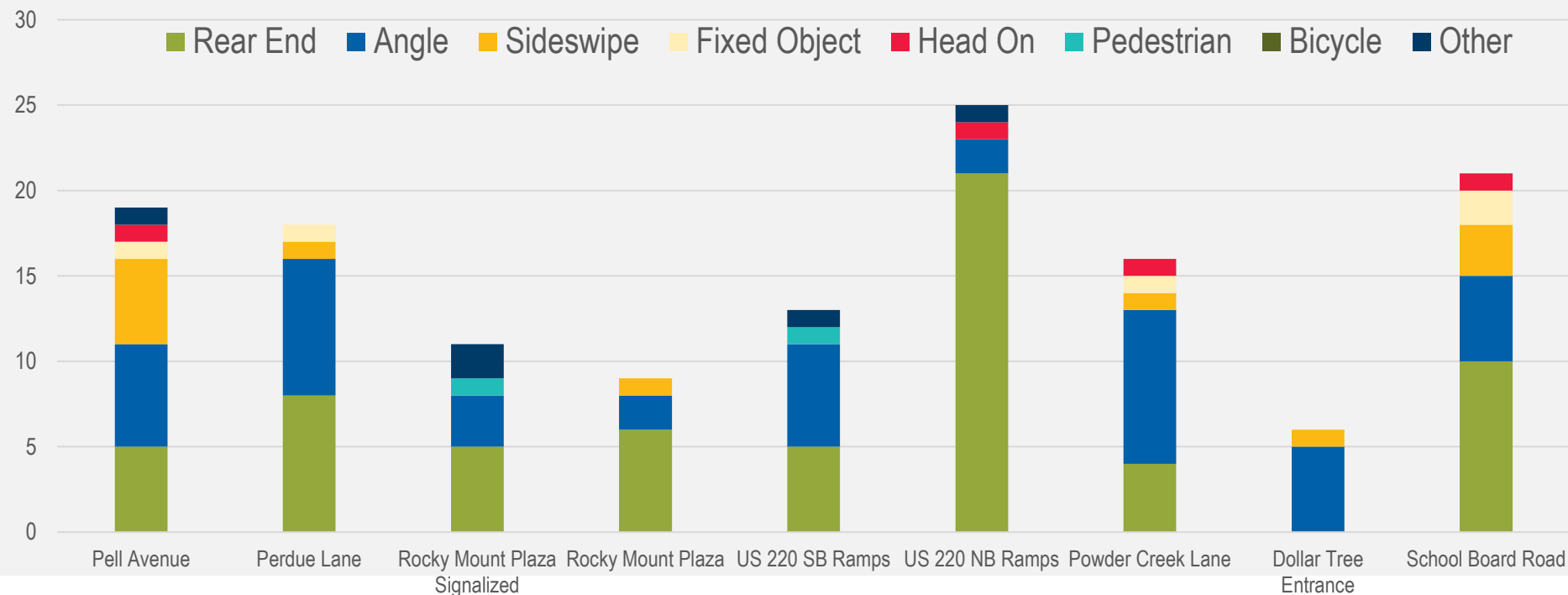
TRAFFIC SAFETY NEEDS



Safety Issues in the Study Area

- Angle crashes at Pell Avenue, Perdue Lane, and Powder Creek Lane; rear-end crashes at the US 220 NB ramps
- Queues in shared left-turn/through lanes
- Multiple full access commercial entrances near signalized intersections
- Two pedestrian crashes resulting in injuries

2018 – 2022 Crashes at Intersections



Crashes by Severity

